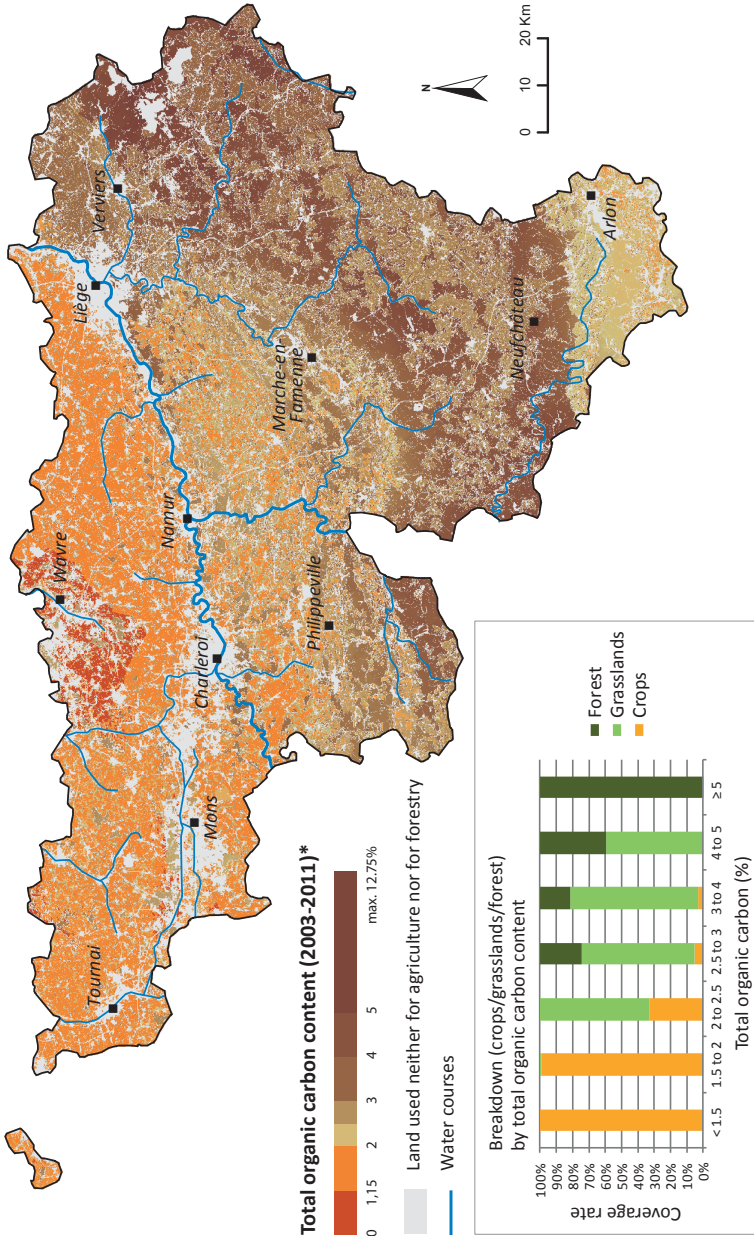


LEVELS OF TOTAL ORGANIC CARBON IN FARMLAND AND FOREST SOILS

→ see fact sheet 8-1



\*Data collected: between 2005 and 2011 for the IPRFW database (forest soil) and between 2003 and 2008 for the REQUASUD database (farmland soil)

ECW 2014 - Source: REQUASUD ASBL (licence A8(2012); SPW - DG03 - DNF (IPRFW) (DEMNA calculations)