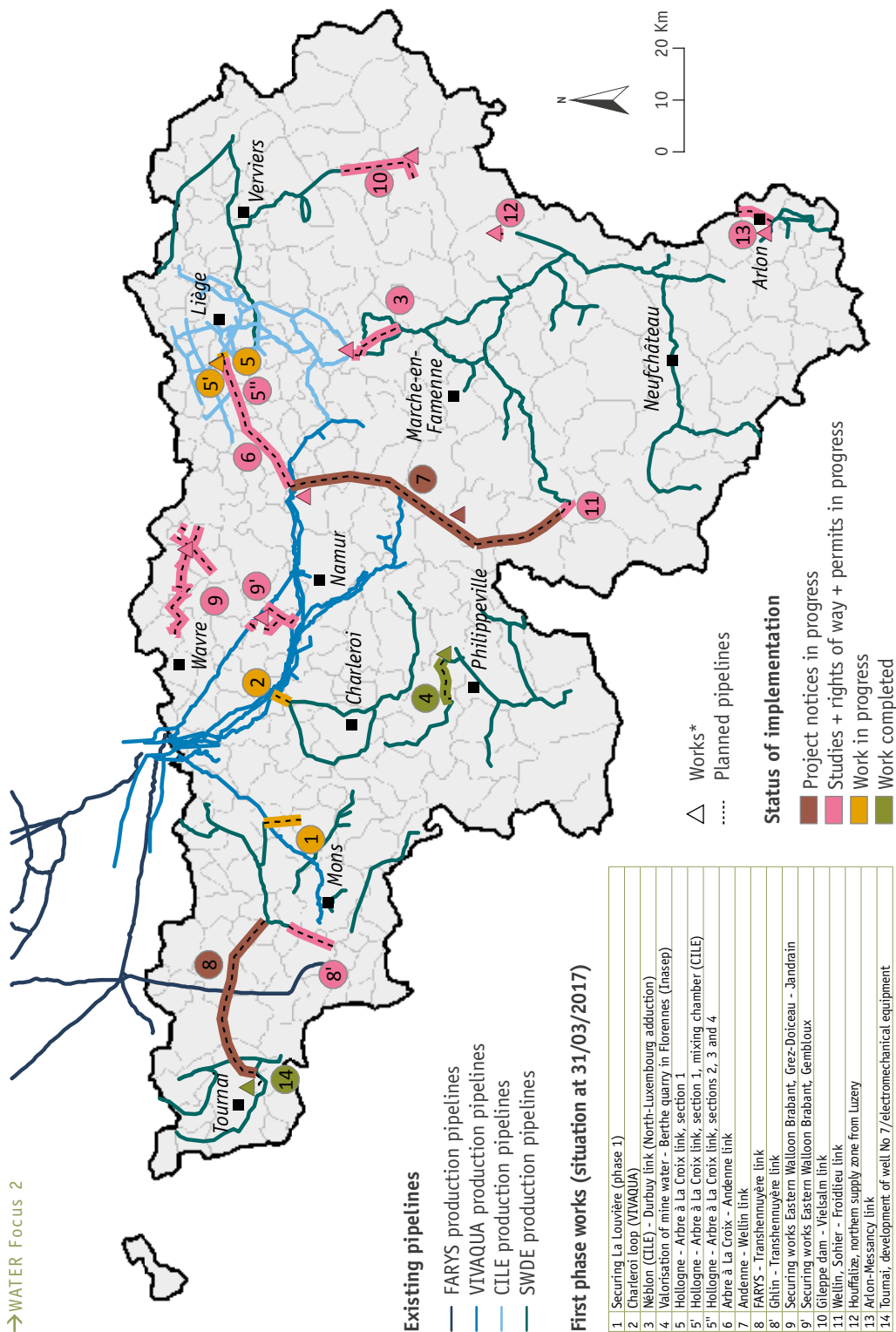


REGIONAL WATER RESOURCES SCHEME

→ WATER Focus 2



Existing pipelines

- FARYS production pipelines
- VIVAQUA production pipelines
- CILE production pipelines
- SWDE production pipelines

First phase works (situation at 31/03/2017)

1	Securing La Louvière (phase 1)
2	Charleroi loop (VIVAQUA)
3	Néblon (CILE) - Durbuy link (North-Luxembourg adduction)
4	Valorisation of mine water - Berthe quarry in Florennes (Inasep)
5	Hollogne - Arbre à La Croix link, section 1
5'	Hollogne - Arbre à La Croix link, section 1, mixing chamber (CILE)
5"	Hollogne - Arbre à La Croix link, sections 2, 3 and 4
6	Arbre à La Croix - Andenne link
7	Andenne - Wellin link
8	FARYS - Transhennuyère link
8'	Ghlin - Transhennuyère link
9	Securing works Eastern Walloon Brabant, Grez-Doiceau - Jandrain
9'	Securing works Eastern Walloon Brabant, Gembloux
10	Gieppe dam - Vilsain link
11	Wellin, Sôhier - Froidieu link
12	Houffalize, northern supply zone from Luseray
13	Arlon-Messancy link
14	Tournai, development of well No 7/electromechanical equipment

- △ Works*
- Planned pipelines

Status of implementation

- Project notices in progress
- Studies + rights of way + permits in progress
- Work in progress
- Work completed

* Production facilities: storage tanks, pumping stations, water towers, treatment plants or production wells.