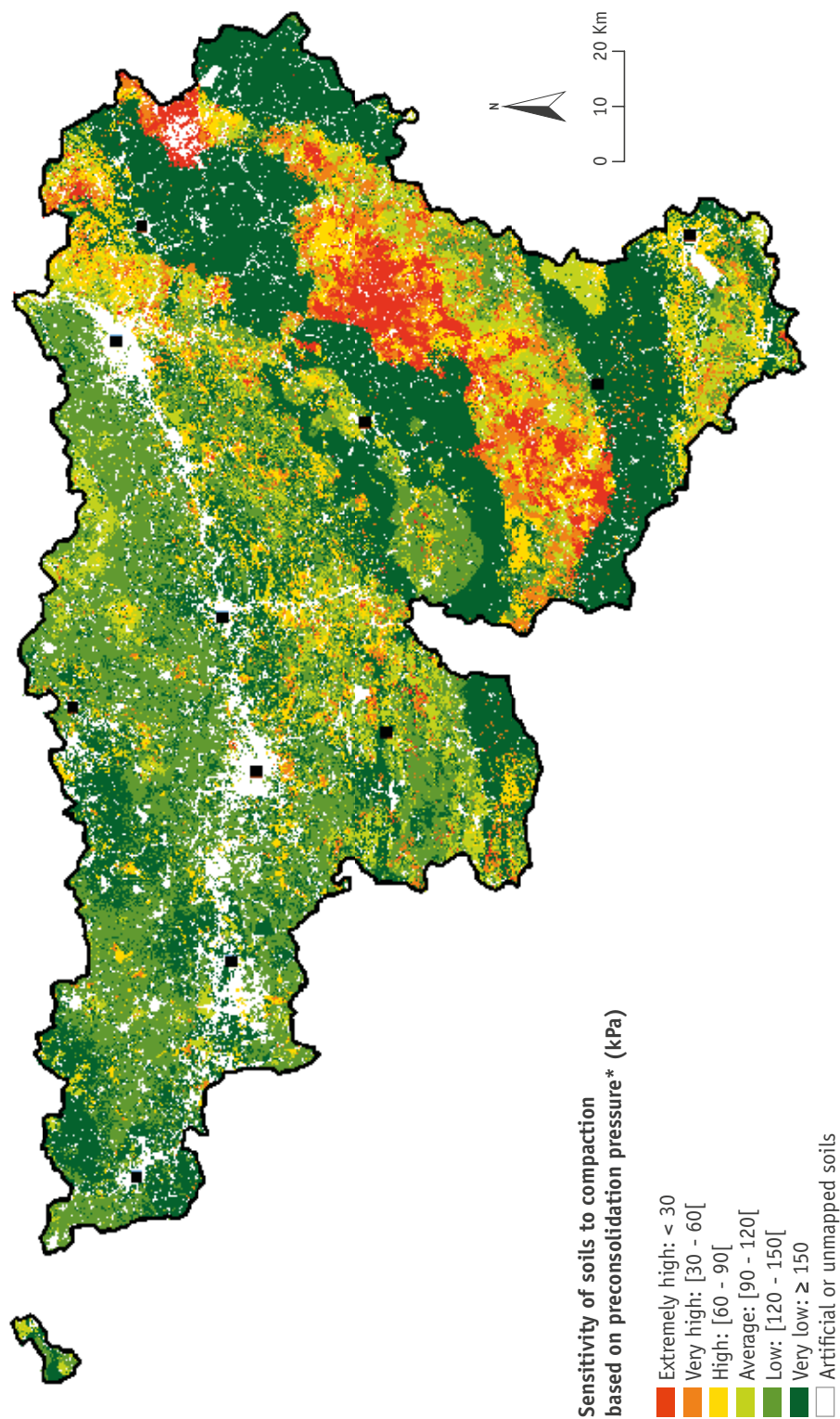


## SENSITIVITY OF SOILS TO COMPACTION

→SOILS Focus 2



\* Average preconsolidation pressure at 40 cm depth at pF 2.5, estimated on the basis of soil properties taking into account the stony load (Ulg-GxABT, 2013a)  
The sensitivity of soils to compaction is all the higher with low preconsolidation pressure values.