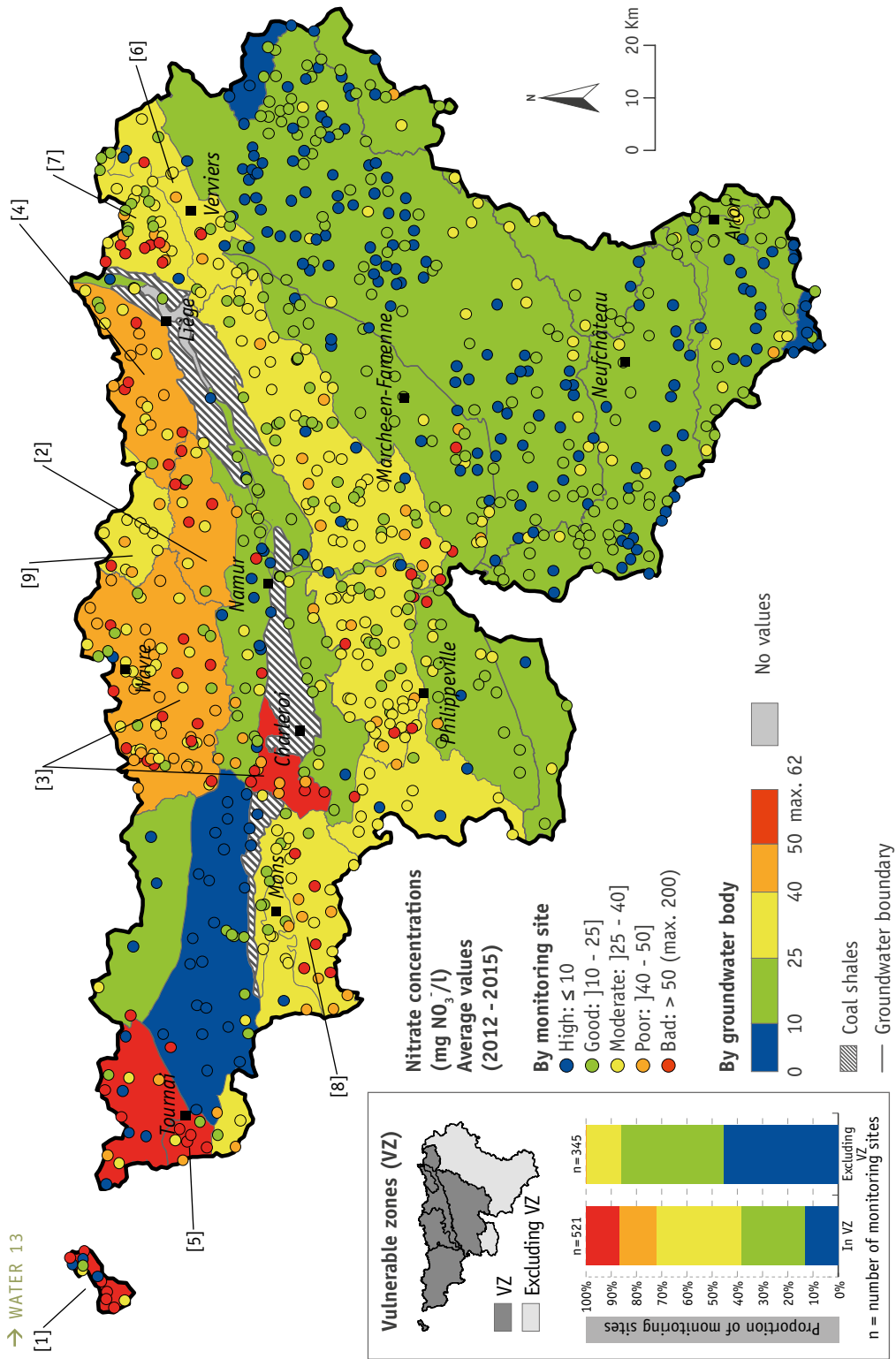


STATUS OF GROUNDWATER ACCORDING TO NITRATE CONCENTRATIONS

→ WATER 13



Groundwater bodies (NO₃] > 30 mg/l)

[1] Sands of the Thionetian of Flanders (Comines-Warmeton) [2] Sands and Chalks of the Meisnoigne [3] Bussellian Sands [4] Cretaceous of Geer

[5] Chalks of the Deulle valley [6] Limestone and Sandstone of the Vestre [7] Cretaceous of the Pays de Herve [8] Chalks of the Haime [9] Sands of the Landénien

SOERW 2017 - Source: SPW - DG03 - DEE (CALYPSO database - nitrate survey)