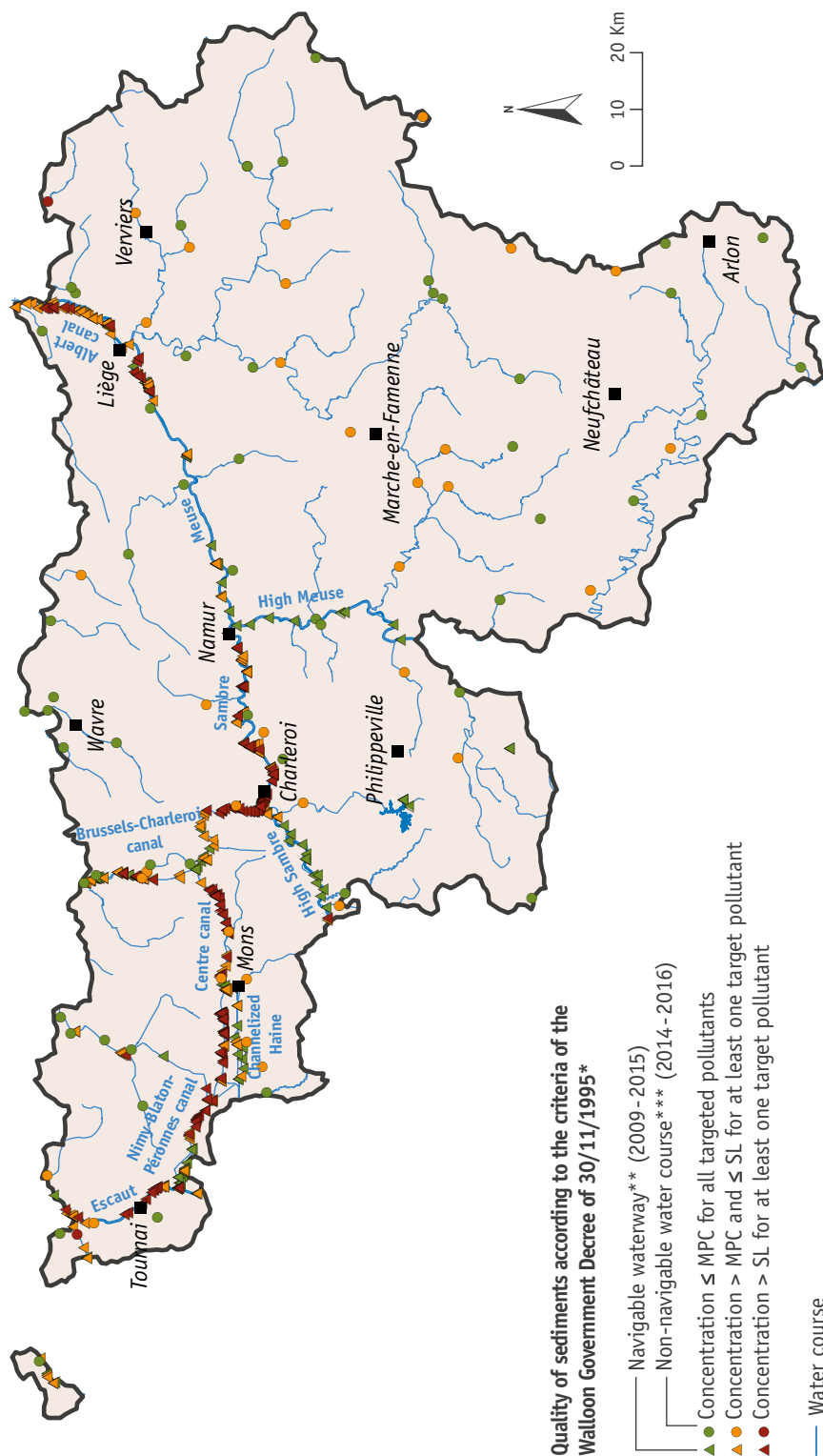


## QUALITY OF SEDIMENTS IN WATER COURSES AND WATERWAYS

→ WATER 12



\* Comparison of pollutant concentrations with the criteria of the Walloon Government Decree of 30/11/1995 on the management of dredging spoils: MPC ("maximum permissible content") and SL ("safety level"). Matter is classified as Category A (not or slightly polluted) if the MPCs are met. Matter is Category B (polluted) if the SL of a pollutant is exceeded. For sediments in navigable waterways, A or B categorisation is done on the basis of leaching tests if the pollutant content is between MPC and SL. In practice, these tests are not carried out for non-navigable water courses.

\*\* Composite sample of sediments taken from the dredging depth (period 2009-2015, fraction < 2 mm)

\*\*\* Composite sample of sediments taken at the 90 sites of the monitoring network (period 2014-2016, fraction < 2 mm)