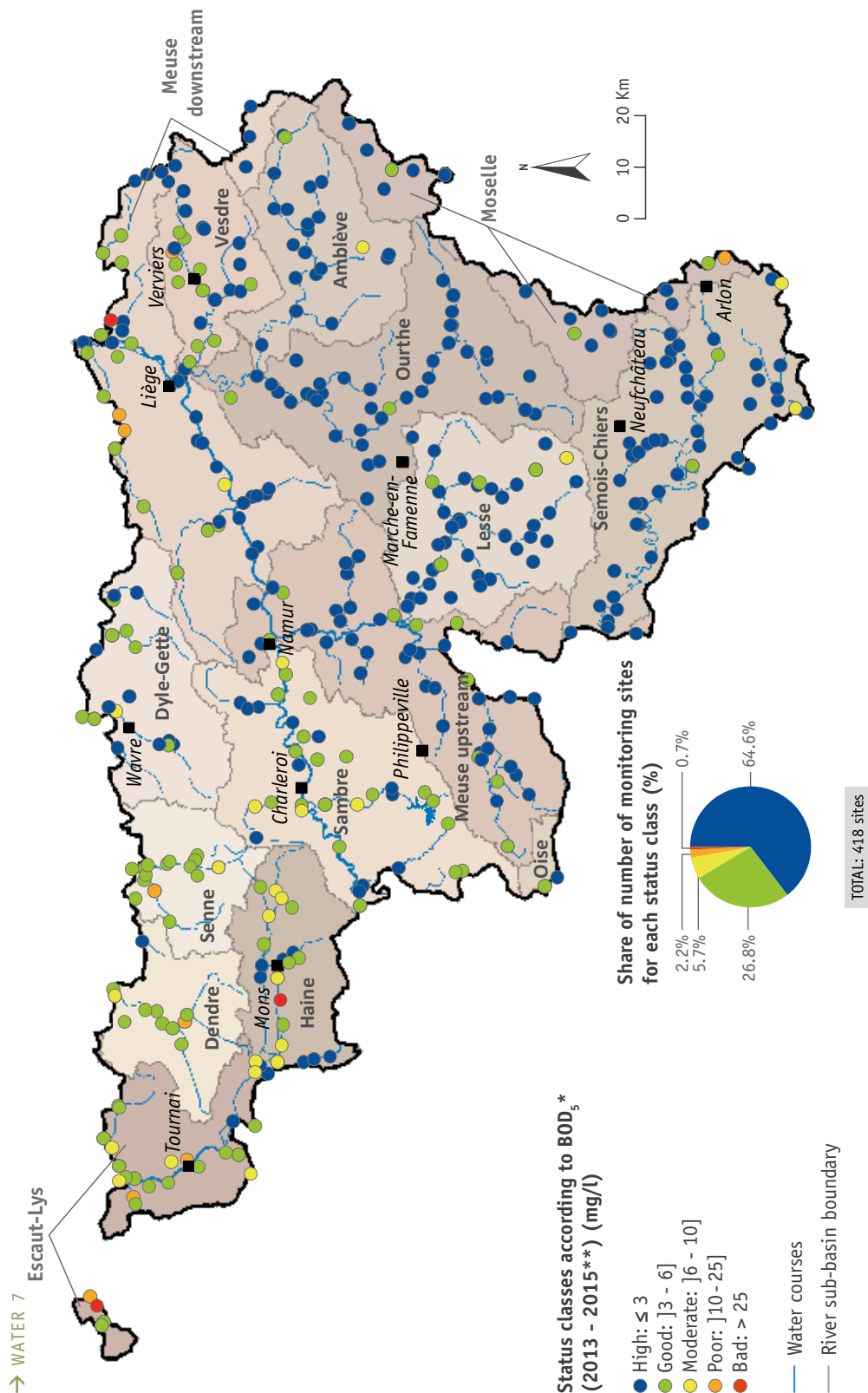


STATUS OF WATER COURSES ACCORDING TO BIOCHEMICAL OXYGEN DEMAND (BOD₅)



* 90th percentile of annual BOD₅.

** Data for 2013 and 2014 are included only in the absence of data for 2015.

SOERW 2017 - Source: SPW - DG03 - DEE (AQUAPHYC database) / DEMMA treatments