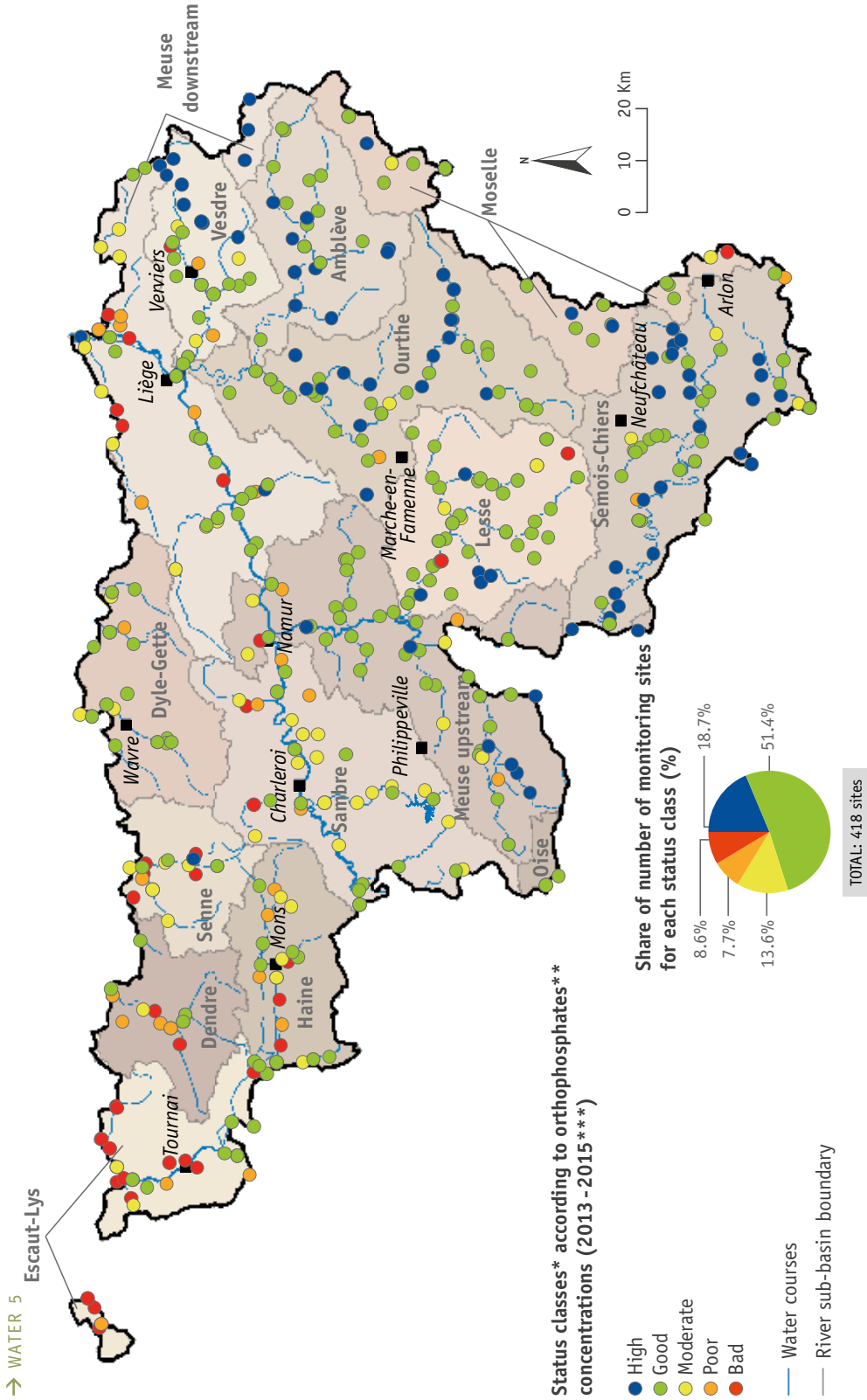


STATUS OF WATER COURSES ACCORDING TO ORTHOPHOSPHATE CONCENTRATIONS



* The limits of the status classes for the parameter "orthophosphates" differ according to the typology of water bodies (Wallonian Government Decree of 13/09/2012).

** 90th percentile of annual concentrations

*** Data for 2013 and 2014 are included only in the absence of data for 2015.

SOERW 2017 - Source: SPW - DG03 - DEE (AQUAPHYC database) / DEMMA treatments