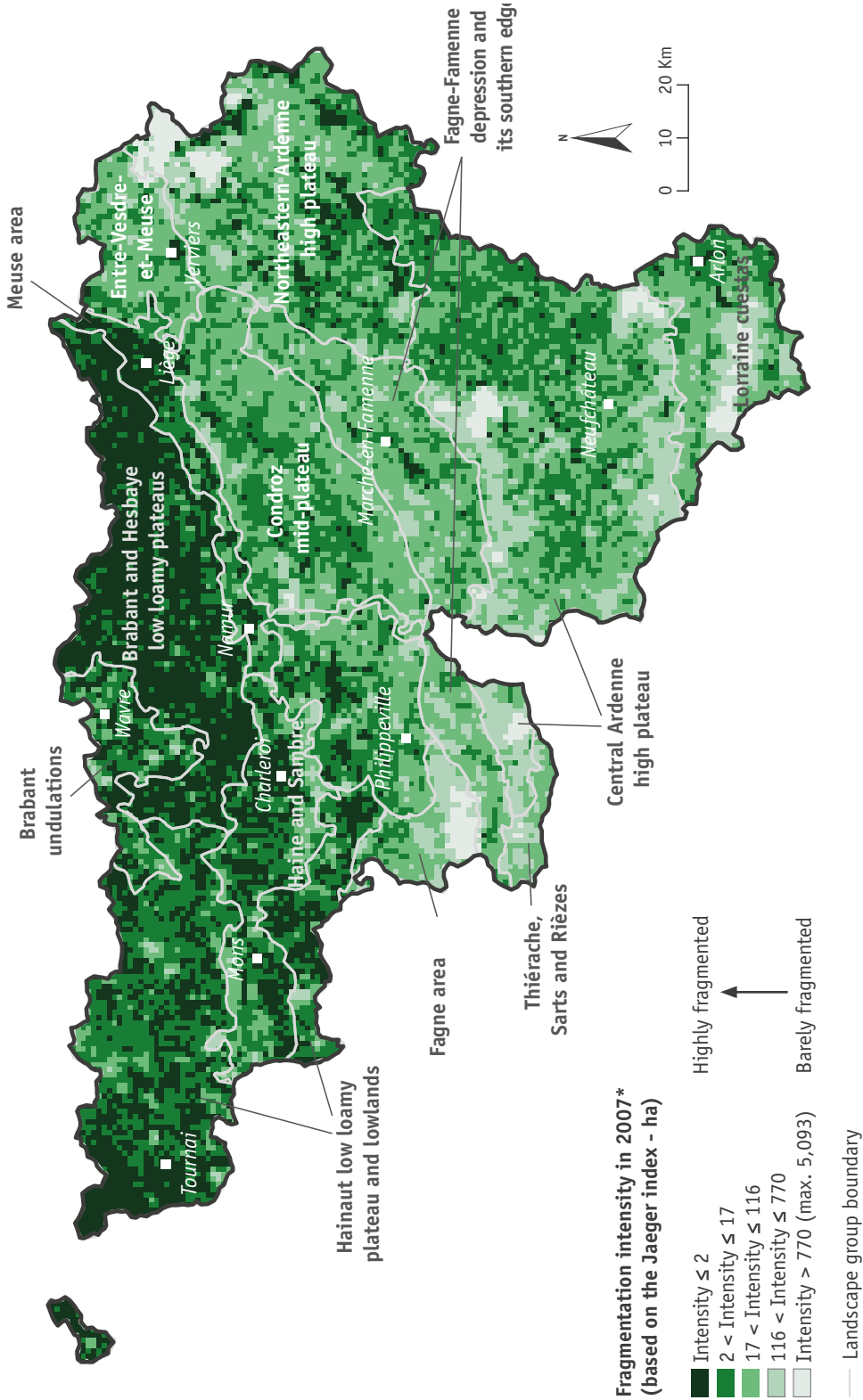


FRAGMENTATION OF ENVIRONMENTS FAVOURABLE TO BIODIVERSITY

→ TERRIT 3



* Considering the environments favourable to biodiversity

SOERW 2017 – Sources: UCL - CREAT (2014); SPW - DG03 - DEMMA; SPW - DG03 - DRCE (COSW_V2_07)